



Integrated coastal zone management in Romania

Claudia Coman (*Black Sea Coastal Centre*)



Constanta: the largest Black Sea harbour city and its coastal zone.
(photo: Claudia Coman)

Contents

1. Why ICZM in Romania?
2. Main coastal issues
3. Where ICZM is applied
4. Romanian approach to ICZM
5. Examples of coastal projects supporting ICZM efforts
6. Lessons from ICZM developments
7. Concluding remarks
8. References

Summary

The Romanian government has adopted the ICZM Law in 2002 and established institutional arrangements. The Ministry of Environment and Sustainable Development is responsible for water and coastal policy development and chairs the high-level national ICZM Committee.

A preliminary ICZM Strategy is drafted. Stakeholder consultation is a part of the coastal management process. The value of integrated spatial planning in the terrestrial and marine Romanian coastal zone is recognised.

The first steps of the ICZM cycle, dealing with the planning phase have taken place.

To facilitate the next steps relating to the implementation of coastal measures, the ICZM Strategy and accompanying Action Plans need to be incorporated into law. Integrated spatial planning of the coastal zone, including the marine part, may be an important legal instrument. In this respect, the Romanian results within the EU Plancoast project connecting the maritime spatial planning with that of the land, can be considered as a first step of integration within the frame of the traditional Romanian spatial and urban planning.

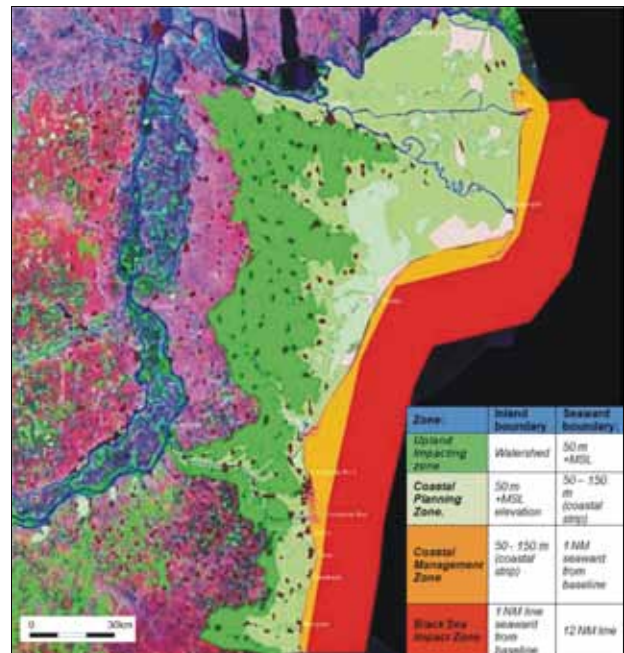
Furthermore, coastal monitoring capabilities, dissemination of coastal data and information are to be strengthened and a few ICZM pilot projects will be undertaken.

International cooperation within an EU context and in the framework of bilateral aid, sharing knowledge and experience, is of great help in the development of the Romanian ICZM programme and in the preparation of adaptive coastal responses.



Constanta, the largest port at the Black Sea, surrounded by intensively used coastal plain. Constanta county: the harbour, city, Danube-Black Sea canal, agriculture grounds, coastal lakes and beaches.

(photo: Digital image taken by STS-112 crew: 17-10-2002, NASA)



Demarcation of the coastal zone in Romania: a first step in the ICZM process

(source: Romanian ICZM Strategy – Outline, 2005)



The pristine coastal zone of the Danube Delta bordered by beaches with a rich variety of natural resources, lakes such as Lake Razelm and Golovita and with a few coastal settlements such as Sulina and Sf Gheorghe. (photo: C. Coman)